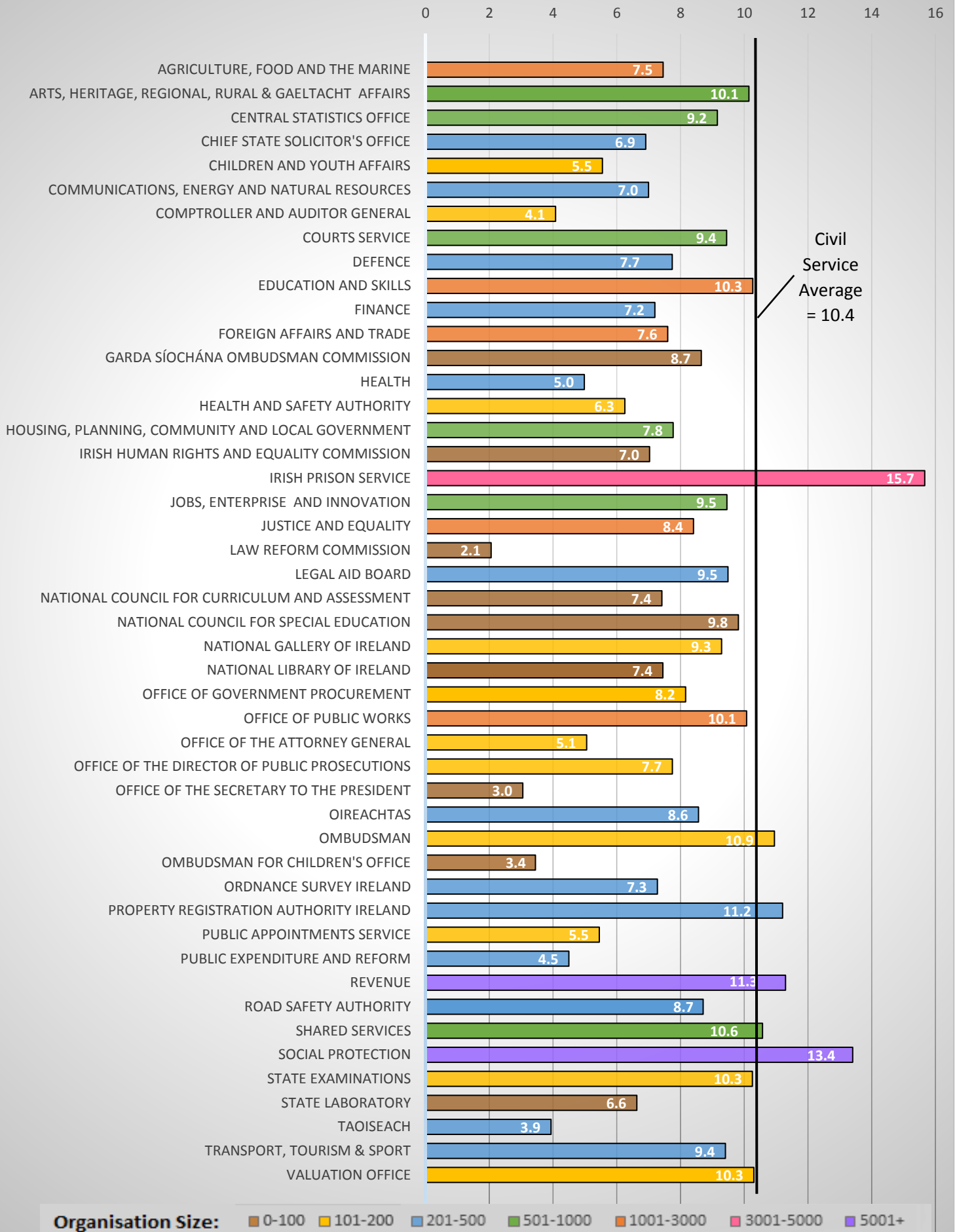


# Civil Service Sick Leave Statistics 2016

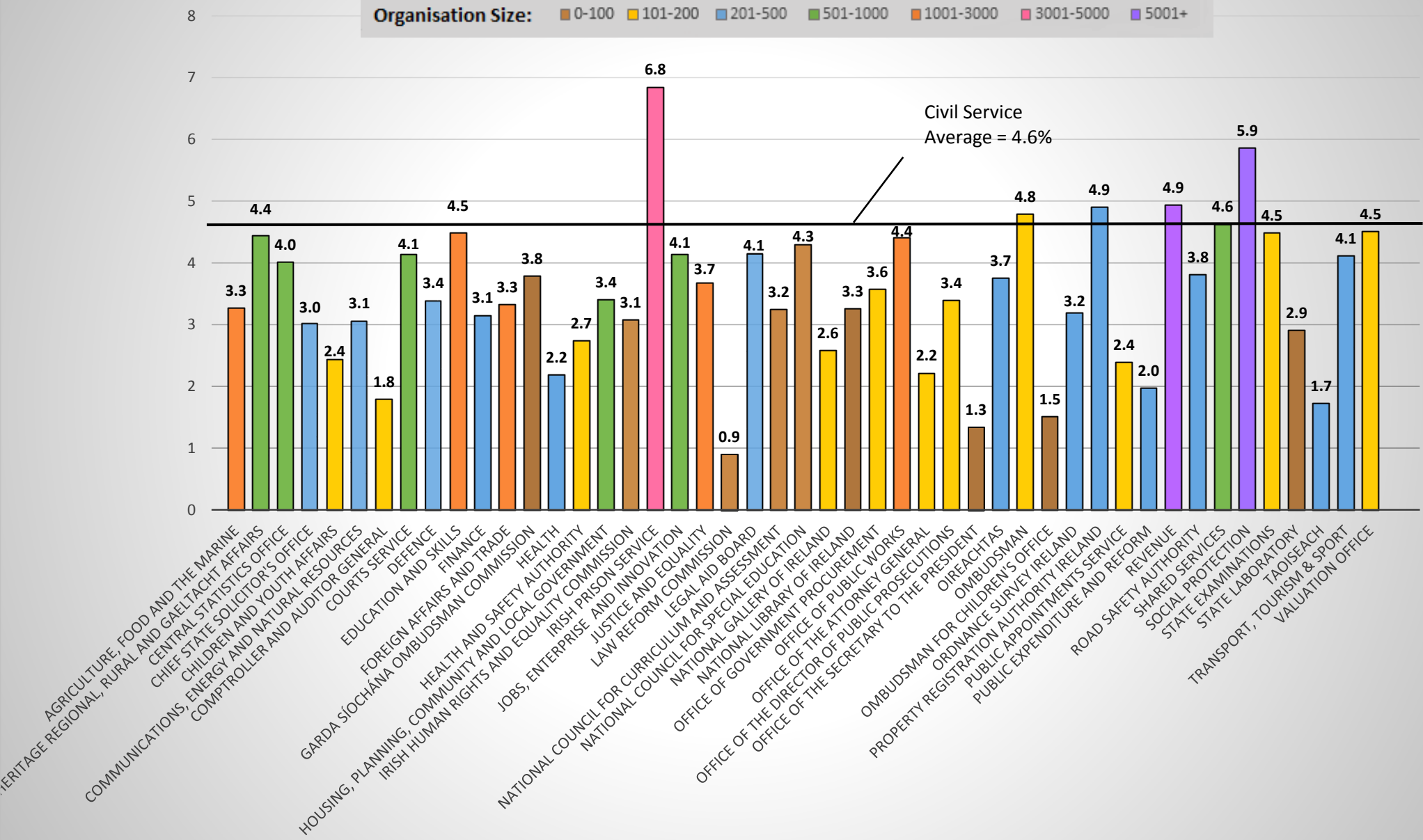
## Average Working Days Lost per FTE



\*Organisations are colour-coded according to size for comparability reasons. Smaller organisations are more susceptible to fluctuations or high percentages as a result of long term absences. \*\*Figures are round to the nearest one decimal place.

# Civil Service Sick Leave Statistics 2016

## Lost Time Rate %



\*Organisations are colour-coded according to size for comparability reasons. Smaller organisations are more susceptible to fluctuations or high percentages as a result of long term absences. \*\*Figures are round to the nearest one decimal place.