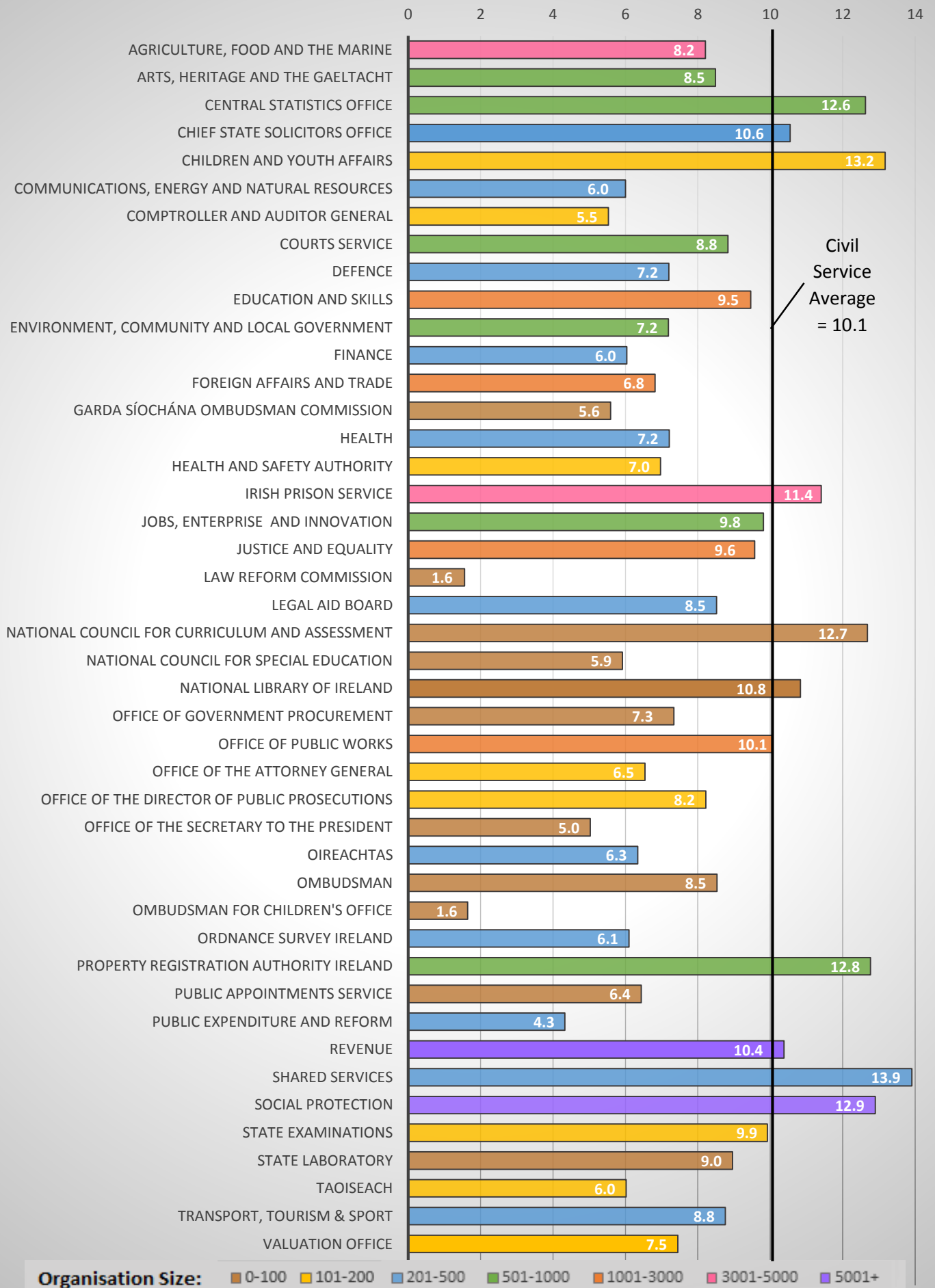


Civil Service Sick Leave Statistics 2014

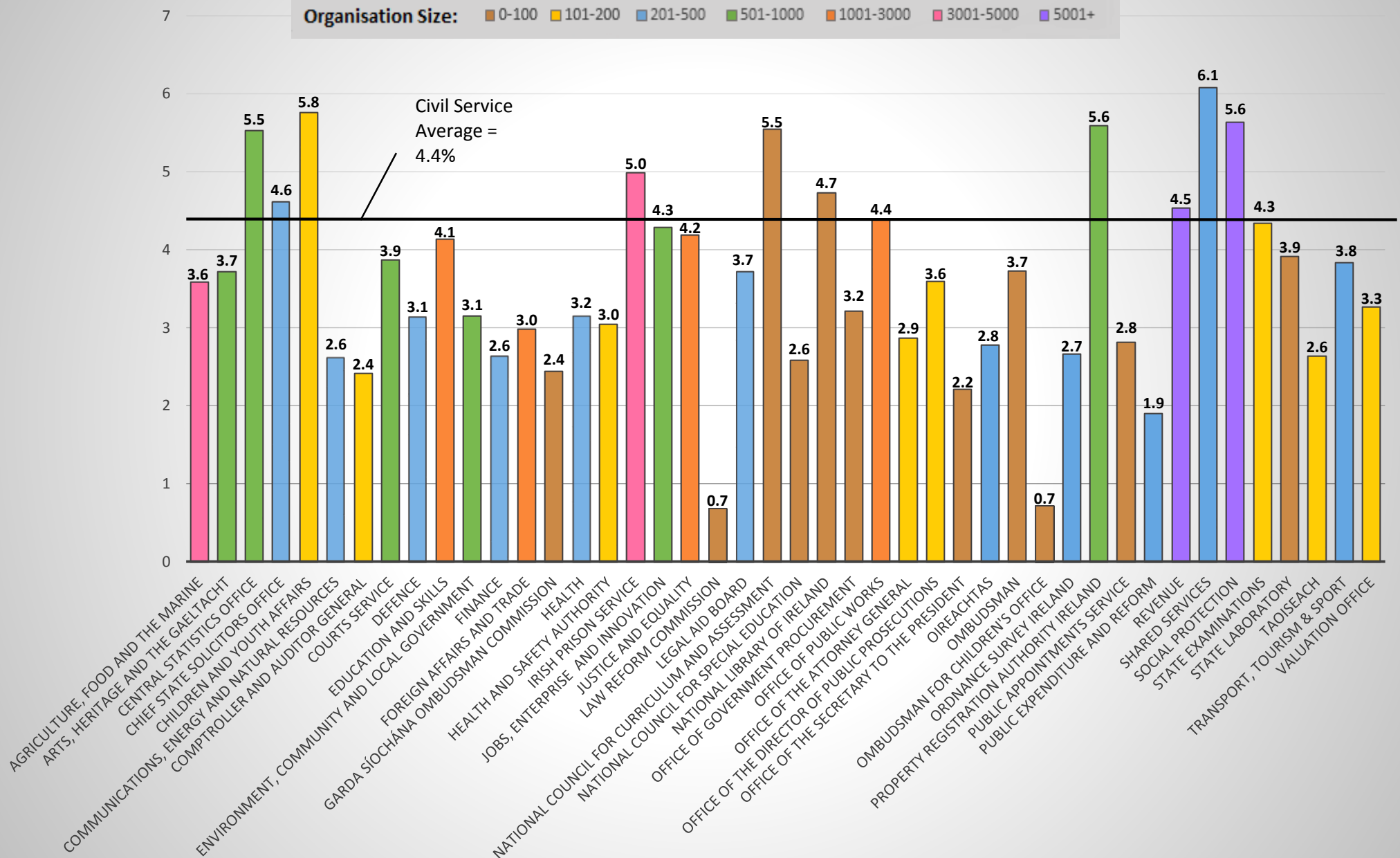
Average Working Days Lost per FTE



Organisations are colour-coded according to size for comparability reasons. Smaller organisations are more susceptible to fluctuations or high percentages as a result of long term absences.

Civil Service Sick Leave Statistics 2014

Lost Time Rate %



Organisations are colour-coded according to size for comparability reasons. Smaller organisations are more susceptible to fluctuations or high percentages as a result of long term absences.